

specifications

current rating:

Wire size	#20	#22	#24	#26	#28	#30
Ampere	5A	5A	4A	3A	2A	1A

voltage rating:250v

contact resistance:10mΩ max

dielectric withstanding:ac 1500v/minute

mates with :HT3002HM-X housing

insulator material:LCP

contact material:BRASS

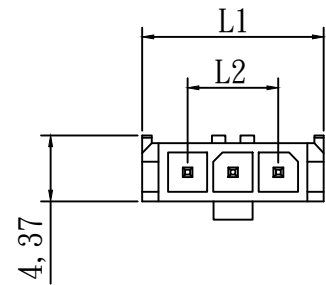
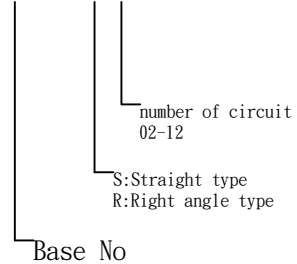
color:black

finish:120u"tin plated

packing:bag

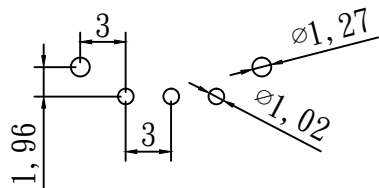
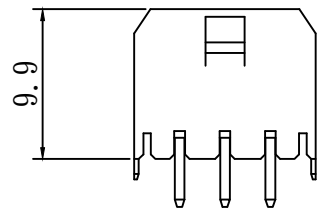
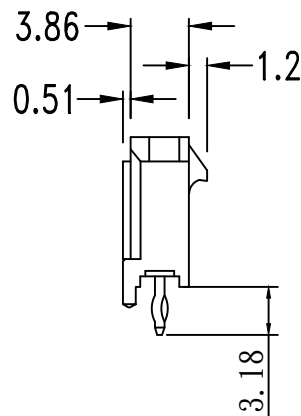
HOW TO ORDER

HT3002W-x-x



$L1=3.0*(NO. OF PIN)+3.65$

$L2=3.0*(NO. OF PIN-1)$



RECOMMENDED P.C.B. LAYOUT

HTE TECHNOLOGY CO.,LTD
HTE 興田科技有限公司

CUSTOMER APPROVAL

P/N

HT3002WS-X

UNIT

mm

SIZE

A4

TITLE

3.0mm single row
straight type

GENERAL TOLERANCE
 0.=±0.25
 0.0=±0.15
 0.00=±0.05

SCALE

2:1

REV.

DESCRIPTION

DATE

DRAWN

LILY

CHECKED

SANDY

SHEET

1/1