

specifications

current rating:

Wire size	#20	#22	#24	#26	#28	#30
Ampere	5A	5A	4A	3A	2A	1A

voltage rating:250v

contact resistance:10mΩ max

dielectric withstanding:ac 1500v/minute

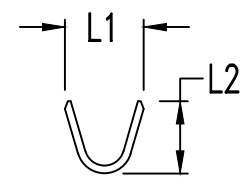
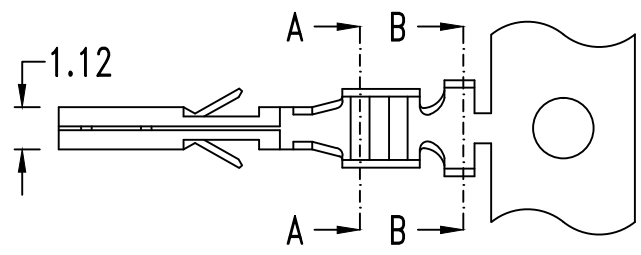
used in:HT3001HM-X series housing

contact material: PHOSPHOR BRONZE

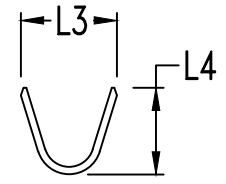
finish:tin plated /gold flash

packing:reel

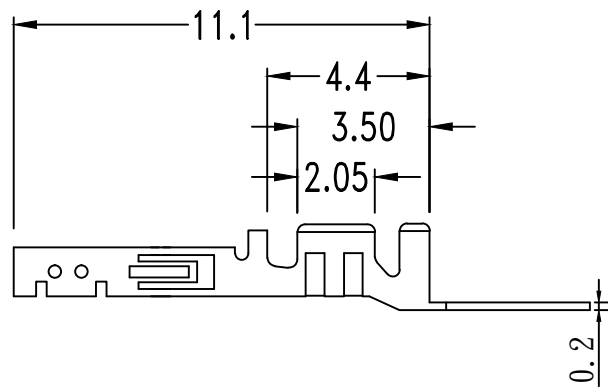
8



SEC. A-A

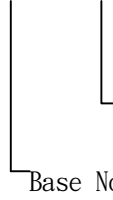


SEC. B-B



HOW TO ORDER

HT3001TF-x



2: wire size #20#22#24AWG
3: wire size #26#28#30AWG

HTE TECHNOLOGY CO.,LTD
HTE 興田科技有限公司

CUSTOMER APPROVAL

P/N

HT300TF-X

UNIT

mm

SIZE

A4

TITLE

3.0mm female terminal

GENERAL TOLERANCE
0.=±0.25
0.0=±0.15
0.00=±0.05

SCALE

2:1

REV.

DESCRIPTION

DATE

DRAWN

LILY

CHECKED

SANDY

SHEET

1/1