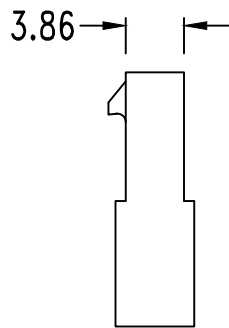
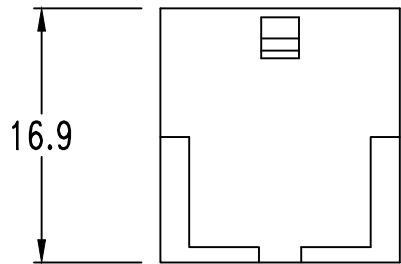


$L1 = 3.0 * (\text{NO. OF PIN}) + 0.85$   
 $L2 = 3.0 * (\text{NO. OF PIN} - 1)$



specifications

current rating:

Wire size	# 20	# 22	# 24	# 26	# 28	# 30
Ampere	5 A	5 A	4 A	3 A	2 A	1 A

voltage rating:250v

insulation resistance:1000MΩ min

dielectric withstanding:ac 1500v/minute

mates with :HT3002HM-X housing

accepts:HT300TM terminals

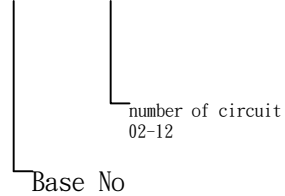
insulator material:UL 94V-0 nylon

color:black

packing:bag

HOW TO ORDER

HT3002HF-x



HTE TECHNOLOGY CO.,LTD  
**HTE** 興田科技有限公司

CUSTOMER APPROVAL

P/N

HT3002HF-X

UNIT mm

SIZE A4

TITLE

3.0mm single row female housing

GENERAL TOLERANCE  
 0.=±0.25  
 0.0=±0.15  
 0.00=±0.05

SCALE 2:1

REV.

DESCRIPTION

DATE

DRAWN

LILY

CHECKED

SANDY

SHEET 1/1